Dr Saraiva Lima House  
23

## 20. GAD Architecture (USA/Turkey)

### PRACTICE BACKGROUND

GAD was founded in Istanbul in 1994 by Gokhan Avcioglu, but recently branched out with new partners Ozlem Ercil and Durmus Dilekci and a New York office. The firm has several major projects on site in Turkey.

### STYLE AND INSPIRATION

The firm describes itself as a partnership, and its work as a 'communication tool' that can interpret the 'economical, ecological, technological and social possibilities of contemporary architecture'. The pair cite Koolhaas, Hadid and Eisenman as firm favourites.

### PROJECTS

GAD are currently working on three major projects in Turkey. The Exploded House, in Bodrum, had to get around outdated rural building codes limiting houses to a maximum of 75 sq m. This was done by creating three structures, each the requisite size, linked by a glass atrium. Also near Bodrum is the Sloped House, the first of five houses occupying a large hillside plot, to be finished in local stone and harmonised with the landscape. Finally, there is the Ramp House, built for a motorcycle enthusiast.

### CONTACT DETAILS

GAD Architecture, 9 Desbrosses Street 515, New York, USA, tel: 1.917 345 0368, [www.gadarchitecture.com](http://www.gadarchitecture.com)

## 21. Azman Owens (UK)

### PRACTICE BACKGROUND

Ferhan Azman and Joyce Owen founded Azman Owens in 1993. The five-strong practice now occupies a converted late Victorian warehouse in Shoreditch - one of

their early projects. Early fit-out and conversion work for the firm involved fashion trade clients, including Alexander McQueen and Isabella Blow.

### STYLE AND INSPIRATION

The practice stresses its tailor-made approach - 'we believe in creating an environment that is resolved and thoroughly responds to the client's brief'.

### PROJECTS

The firm's house in north London occupies a semi-industrial site. Facing onto a private courtyard garden, the wooden louvered façade stands in stark relief to the extensive use of concrete elsewhere. The internal space is dominated by a bright stairwell, while the steps are cantilevered out from a central wall. Downstairs, a kitchen with glazed walls looks onto the garden and other neat touches like a hidden study, top-lit master bathroom and private balcony. More major works are on the way, including offices in Holland and a townhouse refurbishment in London.

### CONTACT DETAILS

Azman Owens Architects, 18 Charlotte Road, London EC2, tel: 44.20 7739 8191, [www.azmanowens.com](http://www.azmanowens.com)

## 22. Lahz Nimmo Architects (Australia)

### PRACTICE BACKGROUND

Lahz Nimmo was established by Andrew Nimmo and Annabel Lahz in 1994 after years of experience working in larger architectural practices. Their six-person firm, based in the Surry Hills suburb of Sydney, specialises in a mixture of commercial and residential.

### STYLE AND INSPIRATION

All projects are worked up from an initial concept, which evolves into a fully detailed design as the brief progresses. Responding to site, context and climate - an important factor in Australia - they also strive for high environmental performance. It's not about 'recognisable style,' but about a design process and philosophy. As well as looking to the great modernist housing on the West Coast of America - Schindler, Lautner and early Gehry - the tough, utilitarian Australian vernacular is also used.

### PROJECTS

The award-winning Casuarina Beach House (W\* 53) on the north NSW coast was designed to be an open living platform next to a timber structure to house the sleeping areas. The 'sleeping box' uses shutters allowing it to open or close, preserving the house's fantastic views across the ocean. Upcoming work for Lahz Nimmo includes a visitors centre at Warragamba Dam, near Sydney, a dramatic building perched on a sheer rock face overlooking a new spillway.

### CONTACT DETAILS

Lahz Nimmo Architects, Level 5, 116-122 Kippax St, Surry Hills, Australia, tel: 61.2 9211 1220, [www.lahznimmo.com](http://www.lahznimmo.com)

## 23. João Pedro Falcao de Campos (Portugal)

### PRACTICE BACKGROUND

João Pedro Falcao de Campos studied architecture at Lisbon, before working with architects in Switzerland and Italy. Since 1993, he has collaborated with local heroes Álvaro Siza and Gonçalo Byrne. His own firm opened in 1987 and is based in a refurbished 18th-century attic in Lisbon's historic town centre.

### STYLE AND INSPIRATION

Unsurprisingly, Portuguese vernacular figures strongly in de Campos's inspiration. He's also a fan, naturally, of Siza's work, not to mention Eduardo Souto de Moura, Victor Figueiredo and Swiss masters Peter Zumthor and Diener + Diener.

### PROJECTS

De Campos's house for Dr Saraiva Lima, near the village of Santa Catarina, is a low-lying structure of admirable simplicity amidst a grove of pine and cork trees. The flat roof overhangs the structure on all sides, creating a shady external area. Construction, using traditional materials such as stone and terracotta as well as concrete, is ongoing - a pool will be added soon. Several house refurbishments are also in the pipeline.

### CONTACT DETAILS

João Pedro Falcao de Campos, rua dos Navegantes, 8 - Sotão, Lapa, Lisbon, Portugal, tel: 351.21 395 09 88, [falcaodecamposarq@sapo.pt](mailto:falcaodecamposarq@sapo.pt)

## 24. Paul Verhey (Netherlands)

### PRACTICE BACKGROUND

Paul Verhey started his own practice back in 1989, and since then has worked on a series of villas in the Dutch countryside and around Amsterdam.

### STYLE AND INSPIRATION

'My work is always in progress,' he muses, 'time finishes it.' Verhey cites his influences as the work of Tadao Ando, Luis Barragán and Lina Bo Bardi, as well as the countries of Yemen, Peru and Tibet.

### PROJECTS

The Villa te Oosterhout was constructed in a new residential area on the edge of a wood, which offered up extensive views. Elevated above ground level, the villa has space for parking below and a feeling of integration with the surrounding trees. An overhanging patio faces south-west, while the sunscreen is completed in red cedar. Verhey is presently working on new villas in Utrecht and Hoofddorp, as well as a holiday home in the eastern part of the country.

### CONTACT DETAILS

Paul Verhey Architecten, M. Van B. Bastiaansestraat, 15, Amsterdam, Netherlands, tel: 31.20 612 9821, [www.verheyarchitecten.nl](http://www.verheyarchitecten.nl)

24  
Villa te OosterhoutConcrete House  
21

## 25. Lorcan O'Herlihy Architects (USA)

### PRACTICE BACKGROUND

Founded in 1989, Lorcan O'Herlihy Architects (better known as LOH/a) is a ten-person office operating out of Culver City, California. O'Herlihy, who previously worked for IM Pei, has extensive teaching credentials, including stints at London's Architectural Association and LA's SCI-Arc.

### STYLE AND INSPIRATION

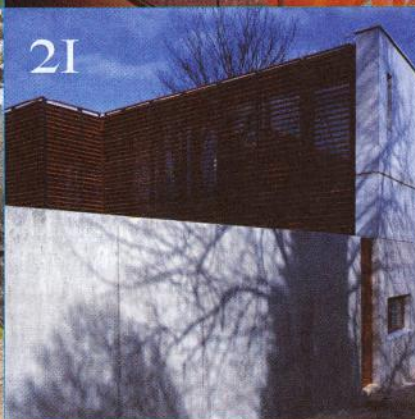
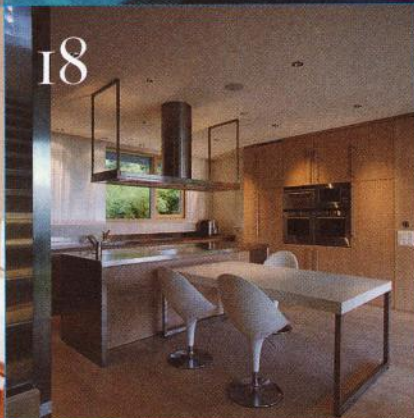
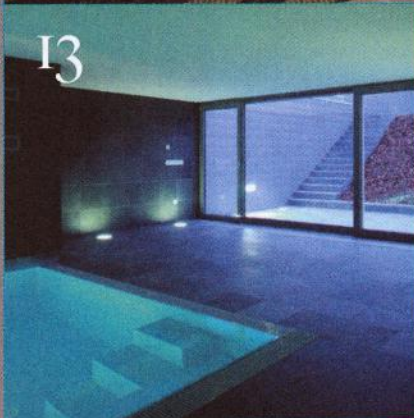
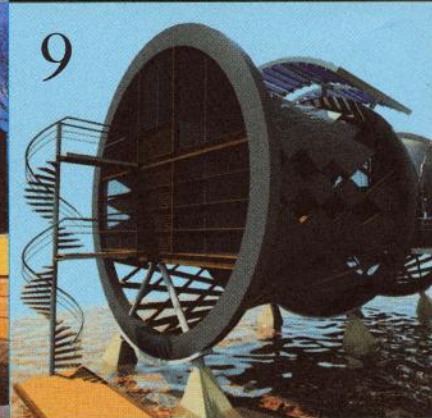
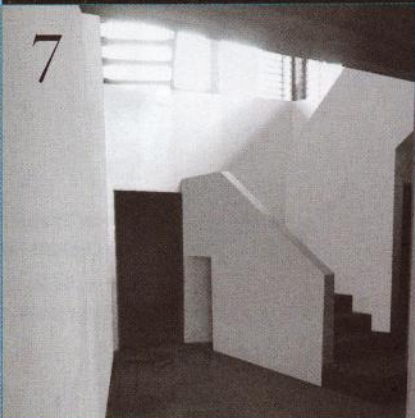
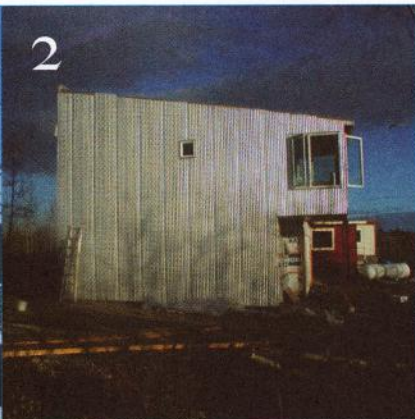
O'Herlihy describes the practice's style as an 'architecture of removal', stripping away the detail in order to focus on purity. Current favourites include Herzog & de Meuron, as well as classic Aalto and Kahn.

### PROJECTS

The firm's Jai House is set on a sloping site overlooking the Santa Monica mountains. Designed to blend seamlessly between structure and landscape, the entrance level opens off the Mulholland Highway, while the 400sq m of living space includes a private yoga studio. On the drawing board is a housing complex in West Hollywood.

### CONTACT DETAILS

LOH/a, 5709 Mesmer Avenue, Culver City, California, USA, tel: 1.310 398 0394, [www.loharchitects.com](http://www.loharchitects.com)



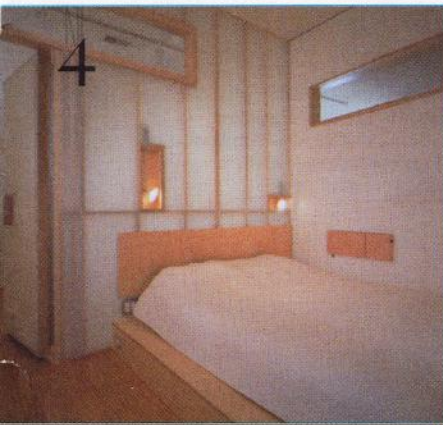
- 1 N Maeda Studio (Japan)
- 2 Kobayashi + Zedda (Canada)
- 3 Farnan Findlay Architects (Australia)
- 4 WETSU (USA)
- 5 Coscia Day (USA)
- 6 R+B (Roldán and Berengüé) (Spain)

- 12 123 DV Architekten (Netherlands)
- 13 Pichler & Traupmann (Austria)
- 14 Fearon Hay (New Zealand)
- 15 Tele-Design (Japan)

- 16 Blondes by Umbrella (Netherlands)
- 17 Buratti + Battiston Architetti (Italy)
- 18 König Architectur (Switzerland)
- 19 Britta e Francesco Buzzi (Switzerland)

- 20 GAD Architecture (USA/Turkey)
- 21 Azman Owens (UK)
- 22 Lahz Nimmo Architects (Australia)
- 23 João Pedro Falcao de Campos (Portugal)
- 24 Paul Verhey (Netherlands)
- 25 Lorcan O'Herlihy Architects (USA)

4



5



6

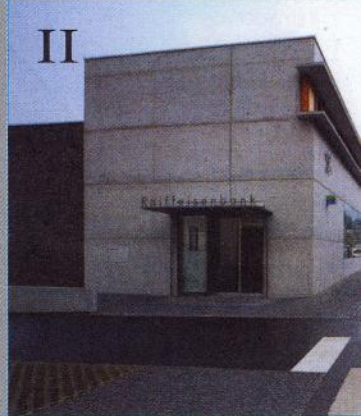


7 Aw + N'Doye Architectes (France/Senegal)  
 8 Jan Jehlik (Czech Republic)  
 9 Botschi Vargas Architects (UK)  
 10 Liechti Graf Zumsteg (Switzerland)  
 11 Gohm & Hiessberger (Austria)

10



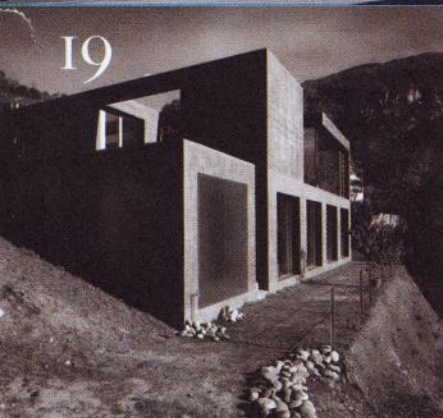
11



15



19



# Architects Directory

When it comes to commissioning someone to create your space, you need to take great care who you select. To help you make the right decision, Wallpaper\* has constructed the list of the 25 bravest, boldest and best emerging architectural practices around the world  
**Editor Jonathan Bell**

23



24



25

